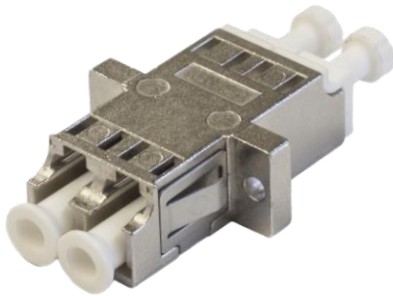


## Fibre Optic Assemblies & Components

# Fibre Optic Metal Adapters

Fibre Optic Adapters are an important component in a fibre optic network; they are used in a fibre optic patch panel or any other outlet to mate two connectors.

Our adapters are made with high precision machines which ensure precise alignment for the connectors when they are plugged in.



### Features & Benefits

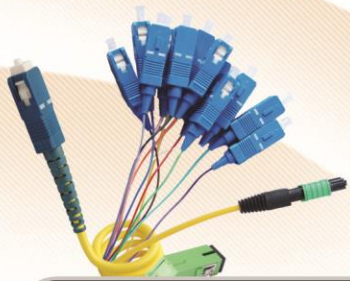
- ISO certified laboratory
- 100% tested on optical performance (Insertion Loss & Return Loss)
- End-face geometry requirement comply to Telcordia GR-326-CORE
- For end-to-end fibre cable connectivity
- Available for singlemode and multimode, including APC
- Male to female hybrid adapter available
- Coloured for easy identification
- Meets Bellcore GR-326 standard

### Applications

- Telecommunications
- Data Communications
- CATV
- LAN/WAN

### Technical Specifications

	Female to Female	Male to Female
Insertion Loss (dB)	≥0.2	≤0.2
Return Loss (dB)	n/a	≥40/50/60
Durability (500 mating)	0.2dB Max Increase	0.2dB Max Increase
Operating Temperature (°C)	-40 - +85	40 - +85
Storage Temperature (°C)	40 - +85	40 - +85



## Fibre Optic Assemblies & Components

# Fibre Optic Metal Adapters

Note: Listed above are our Metal adapter types. Should you require an adapter type that isn't in the table above, please contact us as more types are available in most combinations.

### Ordering Information

Using the available configurations amend/create a part number using the formula below.

Connector Type A		Simplex/Duplex/Quad		Adapter Type	
FC	FC	Simplex	<b>SX</b>	Metal	<b>MA</b>
ST (UPC Only)	ST	Duplex	<b>DX</b>		
SC	SC	Quad	<b>QD</b>		
LC	LC				
E2000	E2				
APC	+A (i.e 'SCA' for SC/APC)				
<b>FC</b>	<b>ST</b>	<b>SX</b>	<b>SM</b>	<b>MA</b>	<b>BL</b>
Connector Type B		Fibre Type		Colour	
FC	FC	Singlemode	<b>SM</b>	Blue (Singlemode Standard)	<b>BL</b>
ST (UPC Only)	ST	Multimode	<b>MM</b>	Beige (Multimode Standard)	<b>BE</b>
SC	SC	OM3/OM4	<b>MM3</b>	Aqua (OM3/OM4 Standard)	<b>AQ</b>
LC	LC			Red (FC Standard)	<b>RE</b>
E2000	E2			Black (ST Standard)	<b>BLK</b>
APC	+A (i.e 'SCA' for SC/APC)			Green (APC Standard)	<b>GR</b>

Example: **FCSTXSMMABL** – Adapter type Metal FC ST Simplex Singlemode Blue

For any queries, please contact the Linxcom team using the details below.