



Cabinets & Racks

Wall-Mounted Cabinet – Model B

Linxcom 19" Wall-mounted cabinets and racks are a cost-effective solution that is both aesthetically pleasing and durable. It is designed to be installed in data centres, equipment rooms and office environments to mount telecommunication, data communication, security, broadcasting and other electronic



Features & Benefits

- Double section with swing construction
- Available in a variety of heights and depths
- Available in grey or black - more colours available
- Tempered glass 200° swing front door with lock
- Feet and castors can be provided for floor-standing option
- Adjustable front and rear mounting rails
- Available ready-built or flat packed
- Rear accessible even when wall-mounted
- 600mm wide body
- Quick removable side doors, optional key locks if required
- Tool-free changing of door orientation
- Vented top and bottom panels enabling ventilation and reliable operation
- Compatible with various 19" accessories
- Maximum 60kgs UDL loading capacity



0 Minute
Assembly



Available
Flat-Packed



Available
Ready-Built



IP Rating
Available



60kgs UDL
Capacity

Below we have our standard stock sizes for height, widths and depths, but we also offer custom-built cabinets. If you require a specification which is not specified, then contact us and we can assist you.

Available Configurations

Capacity (U)	Height (mm)	Widths (mm)	Depths (mm)	Colours
6	370	600	550	Black, Grey
9	500	600	550	Black, Grey
12	635	600	550	Black, Grey
15	770	600	550	Black, Grey

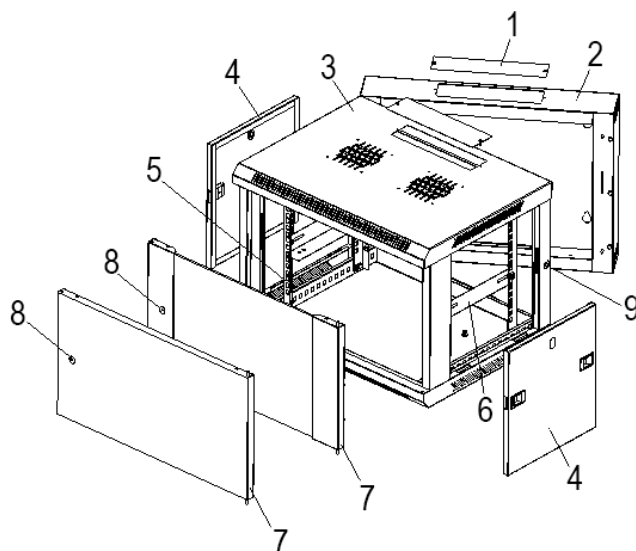


Cabinets & Racks

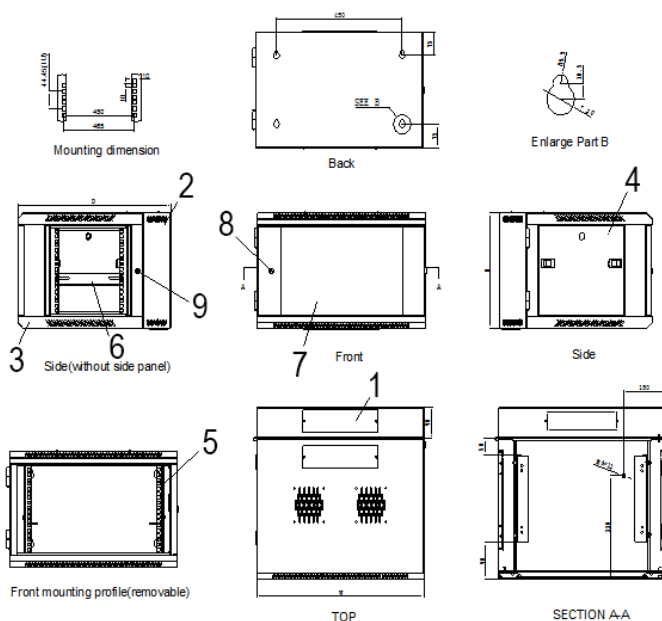
Technical Specifications

Part	Material	Surface
Cable Entry Cover	SPCC Cold-Rolled Steel 1.0mm	Powder Coated/Vented Front & Sides
Back Frame	SPCC Cold-Rolled Steel 1.0mm	Powder Coated
Frame	SPCC Cold-Rolled Steel 1.2mm	Powder Coated/Vented Sides (Optional)
Side Panel	SPCC Cold-Rolled Steel 1.0mm	Powder Coated/Vented (Optional)
Mounting Profile	SPCC Cold-Rolled Steel 1.2mm	Powder Coated
L Fixed Shelf	SPCC Cold-Rolled Steel 1.0mm	Powder Coated
Front Door	Toughened Glass 5mm/SPCC Cold-Rolled Steel 1.2mm	Powder Coated

Technical Drawings



1	Top Cover
2	Back Frame
3	Frame
4	Side Panel
5	Mounting Rail
6	L Fixed Shelf
7	Front Door
8	Lock
9	Lock





Cabinets & Racks

Ordering Information

Using the available configurations amend/create product codes using the formula below.

Linxcom		Colour		Depth	
Linxcom	LXM	Black	BLK	550mm	5
		Grey	GRY		
LXM	B	GRY	6	5	09
Model		Width		U Capacity (Height)	
Model B	B	600mm	6	15U (770mm)	15
				12U (635mm)	12
				9U (500mm)	09
				6U (370mm)	06

Example: **LXMBGRY6509** - Linxcom Model B 9U 600*550mm Grey Double-section Wall Cabinet

For any queries, please contact the Linxcom team using the details below.