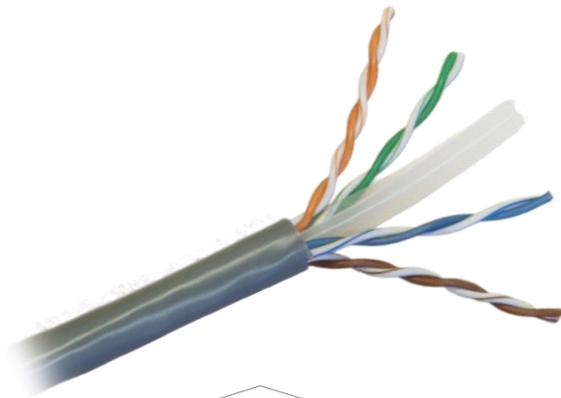




Copper Structured Cabling

Category 6 U/UTP LAN Cable



Linxcom Unshielded Twisted Pair (UTP) Category 6 (CAT6) copper cable is a 23 American Wire Gauge (AWG) used ideally for Gigabit Ethernet, Multimedia, video, voice and data.

Our cables are verified by EC and third party organization and comply with ISO11801. All outer jackets can be PVC or LSZH upon customers' requests.

Features & Benefits

- UL & 3P Certified
- 4 pairs twisted pair cable
- Application: Broadband Video, Gigabit Ethernet, Fast Ethernet
- All cables meet or exceed the requirement proposed by TIA /EIA 568 B .2 ,ISO/IEC 11801 Category 6
- 23AWG insulated copper conducts with PVC jacket
- Twisted pairs are brightly coloured and distinguished at a glance
- the cross frameworks are stripped to match corresponding colour pairs
- Ultra smooth jacket makes this cable easy to pull in tight spaces

Application

- Horizontal wiring in Local Area Networks (LAN)

Colouring

Pair 1	Pair 2	Pair 3	Pair 4
Blue, Blue/White	Orange, Orange/White	Green, Green/White	Brown, Brown/White

Construction

Conductor	Solid Bare Copper
American Wire Gauge (AWG)	23
Insulation	HDPE
Average Thickness (±0.03mm)	0.22
Minimum Point Thickness (mm)	0.20
Insulation Diameter (±0.05mm)	1.00
Twisting Lay Length (mm)	30 (underneath)
Cable Laying Length (±mm)	140
Filler	HDPE
Jacket	PVC or LSZH
Average Thickness (±0.05mm)	0.50
Minimum Point Thickness (mm)	0.40
Outer Diameter (±0.2mm)	6.20
Rip Cord	Per Request

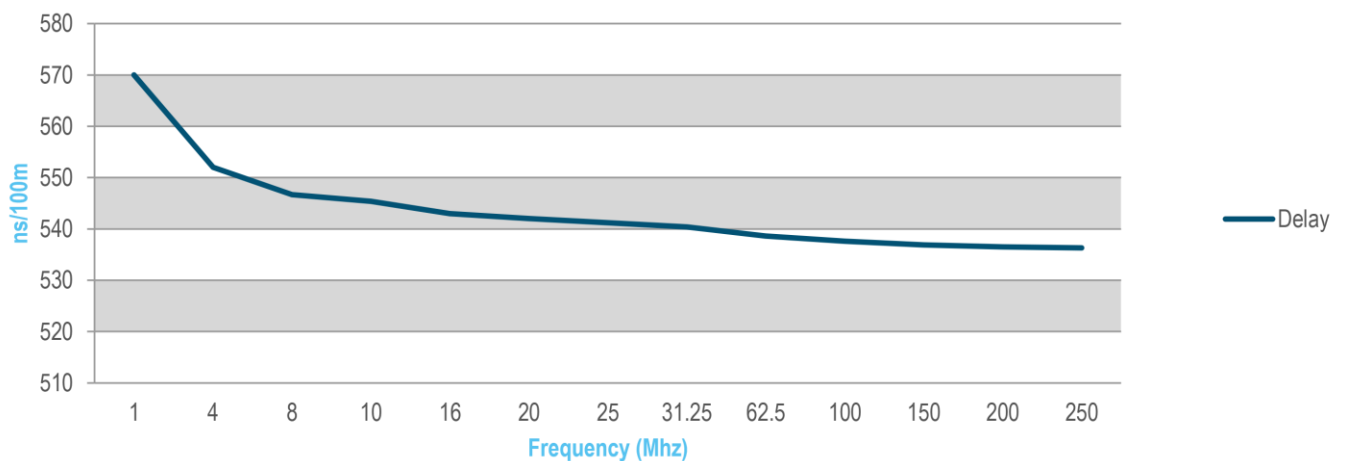
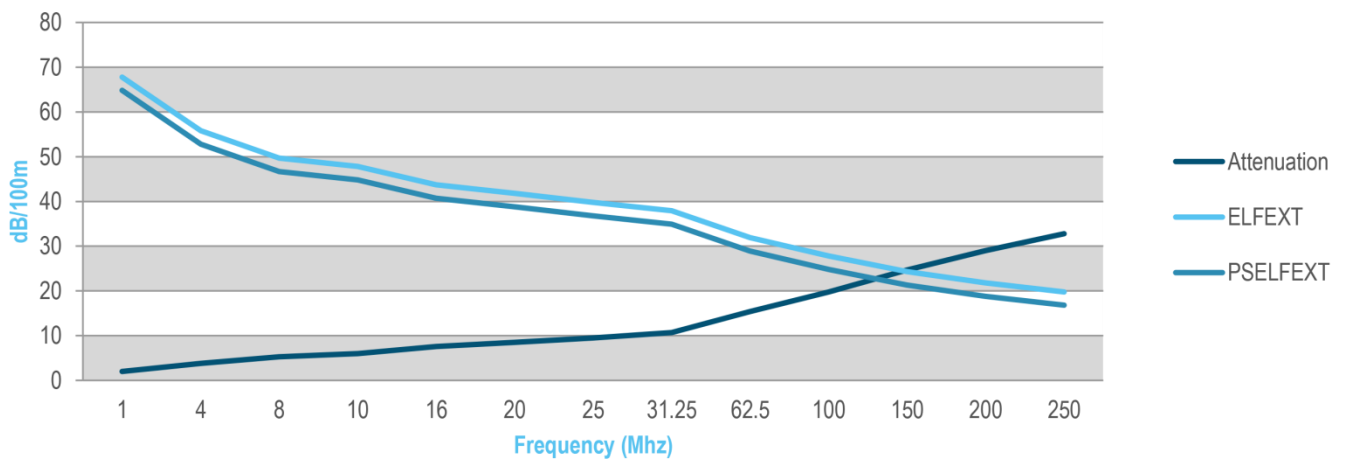
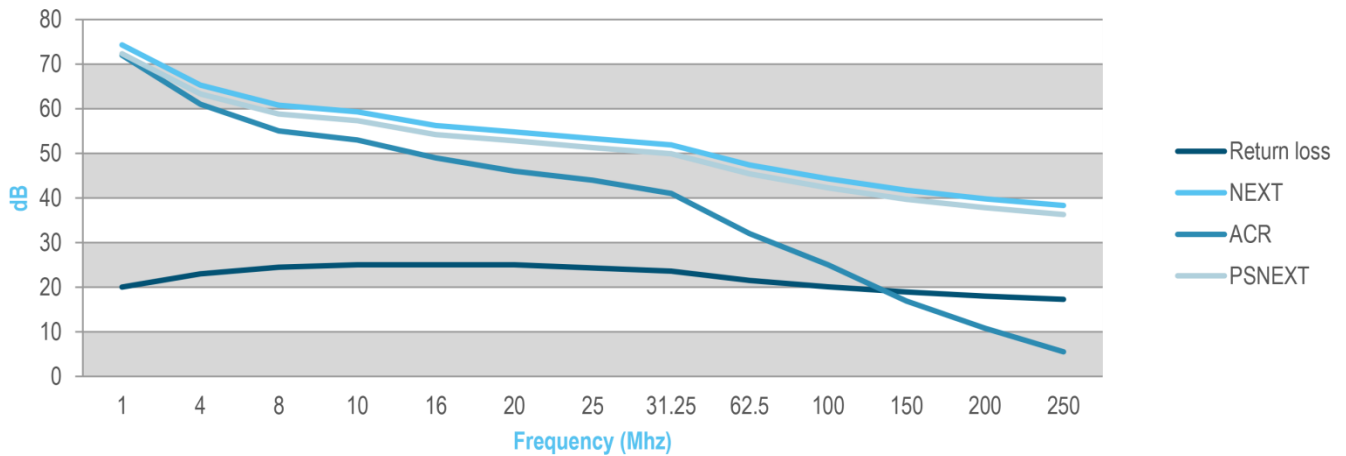


Copper Structured Cabling

Category 6 U/UTP LAN Cable



Electrical Characteristics





Copper Structured Cabling

Category 6 U/UTP LAN Cable



Frequency (MHz)	Return loss (dB)	Attenuation (dB/100m)	NEXT (dB)	ACR (dB)
1	20.0	2.0	74.3	72
4	23.0	3.8	65.3	61
8	24.5	5.3	60.8	55
10	25.0	6.0	59.3	53
16	25.0	7.6	56.2	49
20	25.0	8.5	54.8	46
25	24.3	9.5	53.3	44
31.25	23.6	10.7	51.9	41
62.5	21.5	15.4	47.4	32
100	20.1	19.8	44.3	25
150	18.9	24.7	41.7	16.9
200	18	29.0	39.8	10.8
250	17.3	32.8	38.3	5.5

Frequency (MHz)	PSNEXT (dB)	ELFEXT (dB/100m)	PSELFEXT (dB/100m)	Delay (ns/100m)
1	72.3	67.8	64.8	570.0
4	63.3	55.8	52.8	552.0
8	58.8	49.7	46.7	546.7
10	57.3	47.8	44.8	545.4
16	54.2	43.7	40.7	543.0
20	52.8	41.8	38.8	542.0
25	51.3	39.8	36.8	541.2
31.25	49.9	37.9	34.9	540.4
62.5	45.4	31.9	28.9	538.6
100	42.3	27.8	24.8	537.6
150	39.7	24.3	21.3	536.9
200	37.8	21.8	18.8	536.5
250	36.3	19.8	16.8	536.3

1.0-100.0MHz Impedance (ohms)	100 ± 15
100.0-250MHz Delay Skew (ns/100m)	100 ± 20
1.0-250.0MHz Impedance (ohms)	<=45
Pair-to-Ground Capacitance Unbalance (pF/100m)	<=330
Max. Conductor DC Resistance 20oC (ohms/km)	73.2
Resistance Unbalance (%)	<=5



Copper Structured Cabling

Category 6 U/UTP LAN Cable



Mechanical Characteristics

Test Object	Jacket
Test Material	PVC
Before Tensile Strength (Mpa)	>=13.8
Aging Elongation (%)	>=100
Aging Condition (°C x hrs)	100 x 240
After Tensile Strength (Mpa)	>=85% of unaged
Aging Elongation (%)	>=50% of unaged
Cold Bend (-20±2°Cx4hrs)	No crack
Installation Temperature (°C)	-10 to +25

Ordering Information

Using the available configurations amend/create a part number using the formula below.

Construction		Jacket	
UTP (U/UTP)	UTP	PVC LSZH	PVC LSZH
UTP	6	PVC	305
Category		Length	
Category 6 (CAT6)	6	305m Box	305
		500m Reel	500

Example: **UTP6PVC305** – Category 6 Unshielded Twisted Pair LAN Cable PVC Jacket – 305m Box

For any queries, please contact the Linxcom team using the details below.