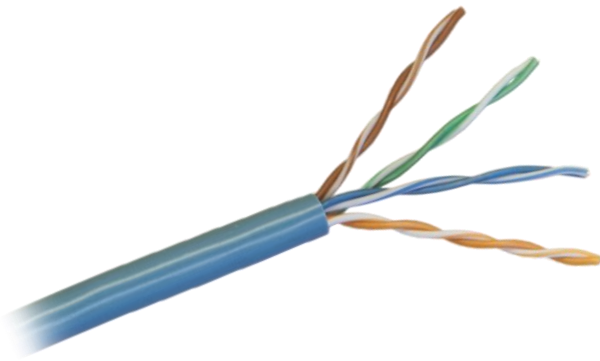




Copper Structured Cabling

Category 5e U/UTP LAN Cable



Linxcom Unshielded Twisted Pair (UTP) Category 5e (CAT5-Enhanced) copper cable is a 24 American Wire Gauge (AWG) used ideally for Gigabit Ethernet, Multimedia, voice and data.

Our cables are verified by EC and third party organization and comply with ISO11801. All outer jackets can be PVC or LSZH upon customers' requests.

Features & Benefits

- UL Certified
- 4 pairs twisted pair cable
- Application: Broadband Video, Fast Ethernet
- All cables meet or exceed the requirement proposed by TIA /EIA 568 B .2 ,ISO/IEC 11801 Category 5e
- 24AWG insulated copper conducts with PVC jacket
- Twisted pairs are brightly coloured and distinguished at a glance
- the cross frameworks are stripped to match corresponding colour pairs
- Ultra smooth jacket makes this cable easy to pull in tight spaces
- 305 metres packaged in full boxes or 500m reels

Application

- Horizontal wiring in Local Area Networks (LAN)

Colouring

| Pair 1 | Pair 2 | Pair 3 | Pair 4 |
|------------------|----------------------|--------------------|--------------------|
| Blue, Blue/White | Orange, Orange/White | Green, Green/White | Brown, Brown/White |

Construction

| | |
|-------------------------------|-------------------|
| Conductor | Solid Bare Copper |
| American Wire Gauge (AWG) | 24 |
| Insulation | HDPE |
| Average Thickness (±0.03mm) | 0.20 |
| Minimum Point Thickness (mm) | 0.18 |
| Insulation Diameter (±0.05mm) | 0.9 |
| Twisting Lay Length (mm) | ≤30 |
| Cable Laying Length (±mm) | 140 |
| Filler | HDPE |
| Jacket | PVC or LSZH |
| Average Thickness (±0.05mm) | 0.50 |
| Minimum Point Thickness (mm) | 0.40 |
| Outer Diameter (±0.2mm) | 5.20 |
| Rip Cord | Per Request |

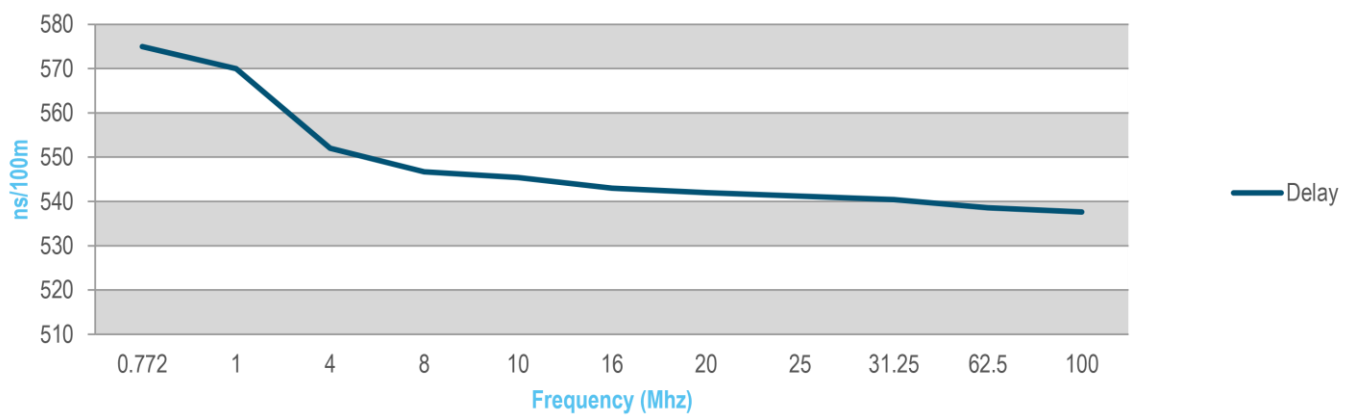
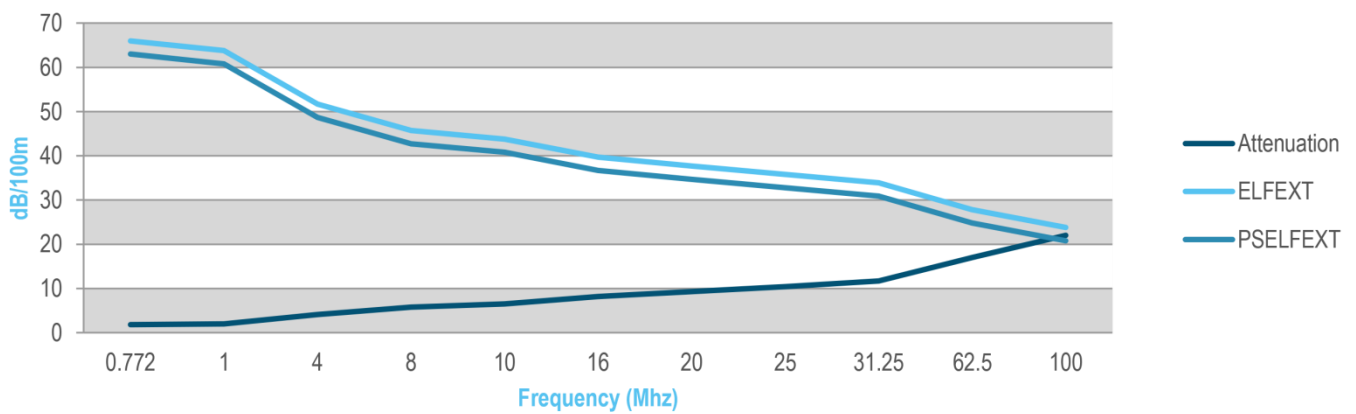
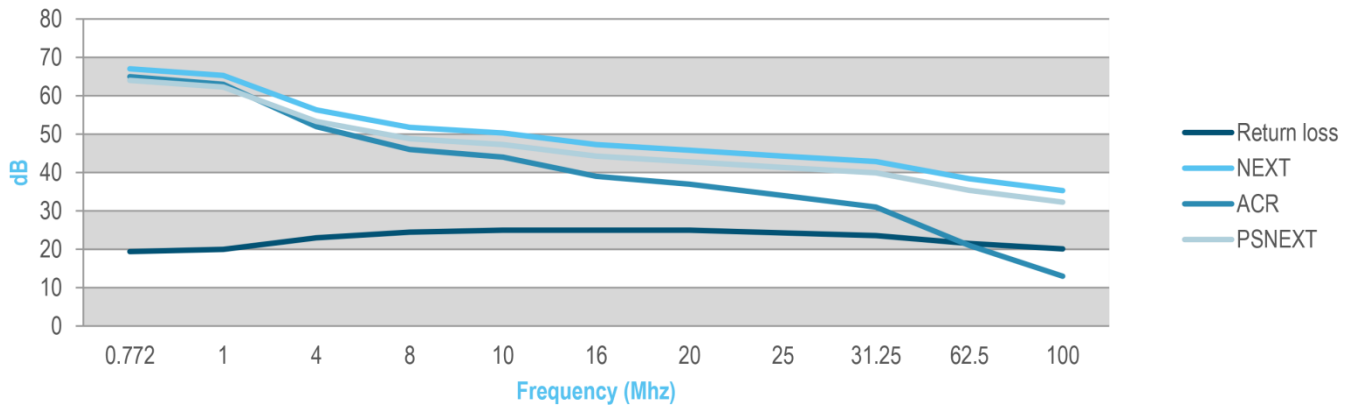


Copper Structured Cabling

Category 5e U/UTP LAN Cable



Electrical Characteristics





Copper Structured Cabling

Category 5e U/UTP LAN Cable



| Frequency (MHz) | Return loss (dB) | Attenuation (dB/100m) | NEXT (dB) | ACR (dB) |
|-----------------|------------------|-----------------------|-----------|----------|
| 0.772 | 19.4 | 1.8 | 67.0 | 65 |
| 1 | 20.0 | 2.0 | 65.3 | 63 |
| 4 | 23.0 | 4.1 | 56.3 | 52 |
| 8 | 24.5 | 5.8 | 51.8 | 46 |
| 10 | 25.0 | 6.5 | 50.3 | 44 |
| 16 | 25.0 | 8.2 | 47.3 | 39 |
| 20 | 25.0 | 9.3 | 45.8 | 37 |
| 25 | 24.3 | 10.4 | 44.3 | 34 |
| 31.25 | 23.6 | 11.7 | 42.9 | 31 |
| 62.5 | 21.5 | 17.0 | 38.4 | 21 |
| 100 | 20.1 | 22.0 | 35.3 | 13 |

| Frequency (MHz) | PSNEXT (dB) | ELFEXT (dB/100m) | PSELFEXT (dB/100m) | Delay (ns/100m) |
|-----------------|-------------|------------------|--------------------|-----------------|
| 0.772 | 64.0 | 66.0 | 63.0 | 575.0 |
| 1 | 62.3 | 63.8 | 60.8 | 570.0 |
| 4 | 53.3 | 51.7 | 48.7 | 552.0 |
| 8 | 48.8 | 45.7 | 42.7 | 546.7 |
| 10 | 47.3 | 43.8 | 40.8 | 545.4 |
| 16 | 44.3 | 39.7 | 36.7 | 543.0 |
| 20 | 42.8 | 37.7 | 34.7 | 542.0 |
| 25 | 41.3 | 35.8 | 32.8 | 541.2 |
| 31.25 | 39.9 | 33.9 | 30.9 | 540.4 |
| 62.5 | 35.4 | 27.8 | 24.8 | 538.6 |
| 100 | 32.3 | 23.8 | 20.8 | 537.6 |

| | |
|--|----------|
| 1.0-100.0MHz Impedance (ohms) | 100 ± 15 |
| 100.0-250MHz Delay Skew (ns/100m) | 100 ± 20 |
| 1.0-250.0MHz Impedance (ohms) | <=45 |
| Pair-to-Ground Capacitance Unbalance (pF/100m) | <=330 |
| Max. Conductor DC Resistance 20oC (ohms/km) | 93.8 |
| Resistance Unbalance (%) | <=5 |

Mechanical Characteristics

| | |
|-------------------------------|-----------------|
| Test Object | Jacket |
| Test Material | PVC |
| Before Tensile Strength (Mpa) | >=13.8 |
| Aging Elongation (%) | >=100 |
| Aging Condition (°C x hrs) | 100 x 240 |
| After Tensile Strength (Mpa) | >=85% of unaged |
| Aging Elongation (%) | >=50% of unaged |
| Cold Bend (-20±2°Cx4hrs) | No crack |



Copper Structured Cabling

Category 5e U/UTP LAN Cable



Ordering Information

Using the available configurations amend/create a part number using the formula below.

| Construction | | Jacket | |
|---------------------|-----|-----------------------|-------------|
| UTP (U/UTP) | UTP | PVC LSZH | PVC LSZH |
| UTP | 5E | PVC | 305 |
| Category | | Length | |
| Category 5e (CAT5e) | 5E | 305m Box 500m Reel | 305 500 |

Example: **UTP5EPVC305** – Category 5e Unshielded Twisted Pair LAN Cable PVC Jacket – 305m Box

For any queries, please contact the Linxcom team using the details below.