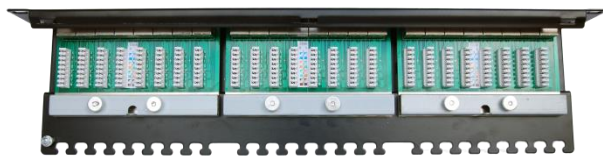




## Copper Structured Cabling

# Category 5e STP IDC Patch Panel 1U 24 Port



Linxcom STP CAT5e patch panels are 19 inch rack mountable IDC/PCB moulded jack patch panels.

All panels comply with the EIA/TIA standard for enhanced Category 5 and are available in a choice of port density. Every patch panel is made with high quality materials, tested and certified by UL and 3P.

### Features & Benefits

- 24 or 48 port Cat5e patch panel
- Space-saving high density 1U
- Meets or exceeds the requirement proposed by TIA /EIA 568 B .2 ,ISO/IEC 11801 Category 5e
- Sturdy aluminium plate around jacks
- Phosphor bronze with 6-50 micro inches gold plated
- Available with colour-coded T568A and T658B wiring patterns
- Easy wiring installation, fit for 110 punch-down tools
- Termination accepts 22, 23, 24 and 26 AWG (0.64-0.4) solid wires
- Black electrostatic powder-coated corrosion-resistant steel

### Applications

- POTS, T1&Tq fractional
- ASDN basic & primary rate
- 4/16 Mbps Token Ring (IEEE802.5)
- 10 BASE-T (IEEE802.3)
- 100 Mbps TP-PMD
- 52/155 Mbps ATM (ATM Forum)
- 100 BASE-T4 (Fast Ethernet)
- 100 VG-Any LAN (IEEE802.12)
- 100 BASE-T (Fast Ethernet)
- 1 Gbps Ethernet (IEEE802.3)

### Colouring

Pair 1	Pair 2	Pair 3	Pair 4
Blue, Blue/White	Orange, Orange/White	Green, Green/White	Brown, Brown/White

### Performance

Insertion Life	750 cycles minimum
IDC Life	200 times (22-26 AWG solid wire) minimum
Plug/Jack Contact Force	100g minimum using FCC-approved plug
Insulation Resistance	100Mohms minimum
Contact Resistance	7Mohms maximum
Dielectric Intensity	AC 1000Vrms, 50Hz or 60Hz in 60s
Plating	Gold (3u", 6u", 15u", 30u", 50u"), Silver (1.25um, 5um)
Modularity	8-pin, 4-pair



Copper Structured Cabling

# Category 5e STP IDC Patch Panel 1U 24 Port

## Ordering Information

Using the available configurations amend/create a part number using the formula below.

Construction		Panel Style	
STP (Shielded Twisted Pair)	<b>STP</b>	IDC/PCB	<b>IDCPP</b>
<b>STP</b>	<b>5E</b>	<b>IDCPP</b>	<b>24</b>
Category		Port Density	
Category 5e (CAT5e)	<b>5E</b>	1U 24 Ports	<b>24</b>

Example: **STP5EIDCPP24** – Category 5e Shielded Twisted Pair 24 Port IDC Patch Panel

For any queries, please contact the Linxcom team using the details below.